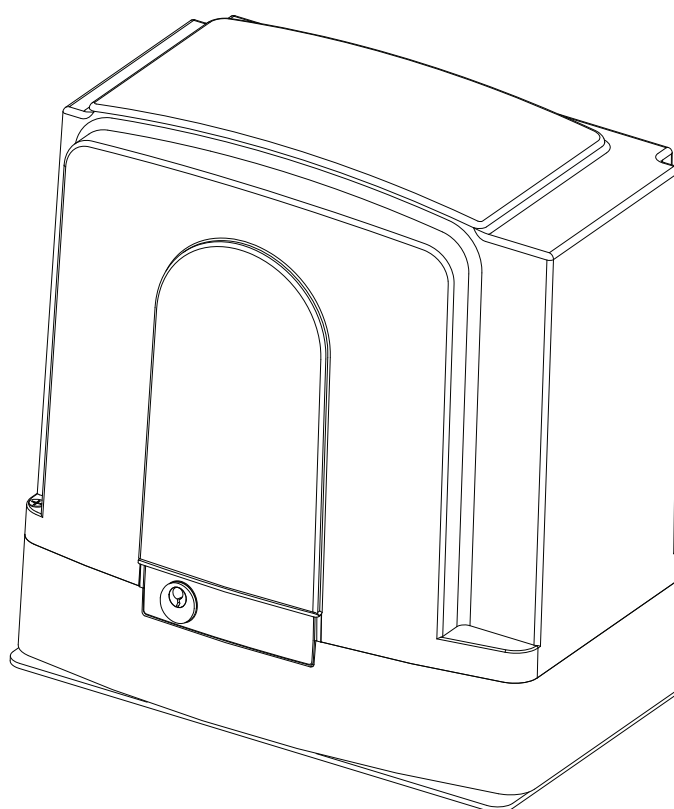


use and maintenance manual

# MOOVY

AUTOMATIONS FOR SLIDING GATES (230/110/24V)



**qui»lö**<sup>®</sup>  
opening solutions

	HIGH SPEED				
TECHNICAL FEATURES	QK-M800BFX	QK-M1000B	QK-M800	QK-M1200	QK-M2000
Power	24Vdc	24Vdc	230Vac 50 / 60Hz	230Vac 50 / 60Hz	230Vac 50 / 60Hz
Current absorbed (motor) (A)	11	11	1,3	1,5	2,4
Power absorbed (W)	280	280	270	330	600
Capacitor (µF)	-	-	16	16	16
Protection level (IP)	54	54	54	54	54
Speed (m/min)	20	12	12	12	12
Max. gate weight (kg)	800	1000	800	1200	2000
Working temp. (°C Min/Max)	-30/+70	-30/+70	-30/+70	-30/+70	-30/+70
Thermal protection (°C)	-	-	140	140	140
Insulation class	F	F	F	F	F
Working cycle (%)	100	100	50	50	70
Weight (kg)	10	10	12	14	17

Also available in 110V. Please add "110" to the item code for 110Vac version  
 For 110Vac version, 230Vac in this user manual must be intended as 110Vac.

#### IMPORTANT NOTICE:

- The installer must refer to the control board user manual to get the full explanation about operating modes, compatible accessories and wirings. 230V models require our QK-CE220RL4 sliding gate control board, 24V models require our QK-CE24V control board. Quiko motors must be controlled by their relative Quiko control board in order to guarantee correct and safe working operations.

- 24V MOOVY models can be supplied by a 24V backup battery unit in order to keep them operative during main power supply failures such as blackouts.

To ensure a safe operation of the drive the installer must use our QK-BPACK1 backup battery unit OR equivalent commercial rechargeable batteries with the following specifications:

Type: Lead Acid Battery  
 Voltage: 24V (2 x 12V batteries must be connected in series)  
 Capacity: 1.3Ah each

#### Warning:

- The appliance is only to be used with the backup power supply unit provided by the constructor or equivalent backup power supply unit as specified by the constructor;

## GENERAL PRECAUTIONS FOR INSTALLERS



***WARNING: Important safety instructions.  
Follow all instructions since incorrect  
installation can lead to severe injury.***

### 1- BEFORE INSTALLING THE AUTOMATION

Before installing the automation, you must check that:



- Safe handling of drive and other parts weighing more than 20 kg by the use of proper handling means, such as hooks and ropes
- The driven part is in good mechanical condition, correctly balanced and opens and closes properly
- The wheels of the gate are attached to make the gate stable and must be in good condition;
- The entire length of the fixed rail must be free of obstacles, straight and clean and have stoppers at the ends;
- The upper guide, must be parallel to the rail and lubricated, and it must allow for a clearance of about 1 mm from the door
- the drive cannot be used with a driven part incorporating a wicket door unless the drive can only be operated with the wicket door in the safe position;
- that entrapment between the driven part and the surrounding fixed parts due to the opening movement of the driven part is avoided;
- the actuating member of a biased-off switch is to be located within direct sight of the driven part but away from moving parts. Unless it is key operated, it is to be installed at a minimum height of 1,5 m and not accessible to the public
- the temperature range marked on the drive is suitable for the location;
- Electro-sensitive protective equipment shall be accessible for inspection purposes after installation;
- The appliance is not used for gates with wicket door, because this appliance cannot be used for gates with wicket door;
- you have all the tools, materials and safety devices you will need for moving and installing the appliance in total safety in compliance with applicable regulations;
- the installation and movement of the appliance is done respecting the needed safe distances in order to protect fingers, hands, feet and body;
- a switch is incorporated in the fixed wiring in accordance with the wiring rules in order to allow disconnection of the appliance from the power supply after installation;
- the earth system has been installed correctly: earth all the metal parts belonging to the entry system (doors, gates, etc.) and all parts of the system featuring an earth terminal.
- the power cable is properly stripped to allow the earth wire to be connected to the relevant terminal, while leaving the live wires as short as possible. The earth wire must be the last to be pulled out in the event the cable's fastening device comes loose.

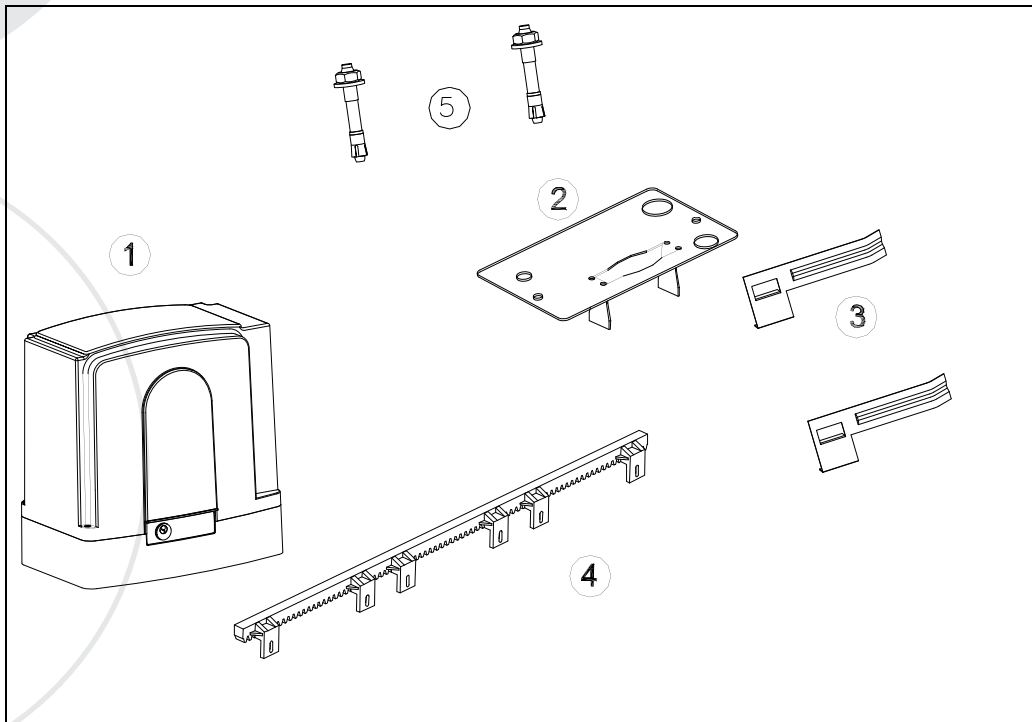
### 2- AFTER INSTALLING THE AUTOMATION

After installing the automation, you must check that:

- that the mechanism is properly adjusted and that the protection system and any manual release function correctly;
- the label concerning the manual release, adjacent to its actuating member is permanently fixed;
- fixed wirings which may come in contact with sharp edges or high temperature parts are properly protected by insulating sleeving having an appropriate temperature rating;

Quiko Italy Srl is liable only for products it manufactures and commercializes. Once automated, the gate becomes a machine and is therefore subject to the rules of the "Machinery Directive". It is on the installer to verify its security. **WARNING:** Quiko Italy Srl is not liable for any damages to people, animals or things due to unauthorised modifications, alterations or betterments on its products by third parties.

### 3 - MATERIALS FOR INSTALLATION



**FIG. 1**

1. Gearmotor
2. Counterplate
3. Limit switches brackets (cammes)
4. M4 rack (NOT INCLUDED)
5. M10 Anchor bolts (NOT INCLUDED)

### 3- POSITIONING THE COUNTERPLATE

Dig a concrete foundation base following measurements shown on fig. 2, 3. Position the counterplate making sure it is perfectly levelled and smooth and complying with the measurements shown on fig. 2, 3. Route the conduits through the base holes and let them come out for at least 25 cm. If a concrete foundation base is already available, do not unfold the anchor leaves and fasten the base only with the anchor bolts.

### 4- POSITIONING THE GEARMOTOR

Drill two holes  $\varnothing$  10 mm on the concrete in correspondence of the holes of the counterplate. Install the anchor bolts and fasten to the concrete. Remove the gearmotor removable cover. Position the gearmotor onto the counterplate. Temporary fasten the gearmotor to the base by tightening the anchor bolt nuts. The gearmotor position can be adjusted horizontally of approx. 15 mm

If the anchor bolts are not available it is possible using 2 bolts M10x25. The head of the bolts shall be tack welded to the base plate before the counterplate is embedded on the concrete

### 5- INSTALLING THE RACK

Use a M4 Rack. Release the gearmotor and set the gate in the open position. Place the rack on pinion leaving at least 2 mm of gap between the gear teeth. Fasten the rack to the gate in such manner that the bolts are in the middle of the rack slots (in this way it shall be possible adjust in the future the right gap between the rack and pinion). Move the gate manually to secure all rack pieces along its full length. Once the rack has been installed, finally check the gap of 2 mm between the pinion and the rack. Finally secure the gearmotor with the nuts.

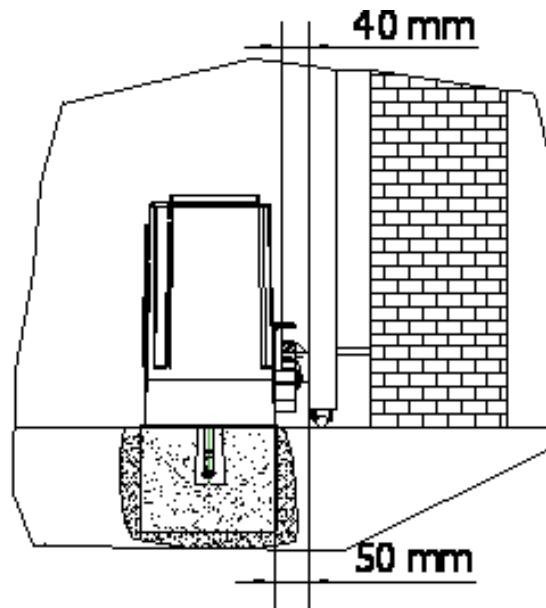


FIG 2

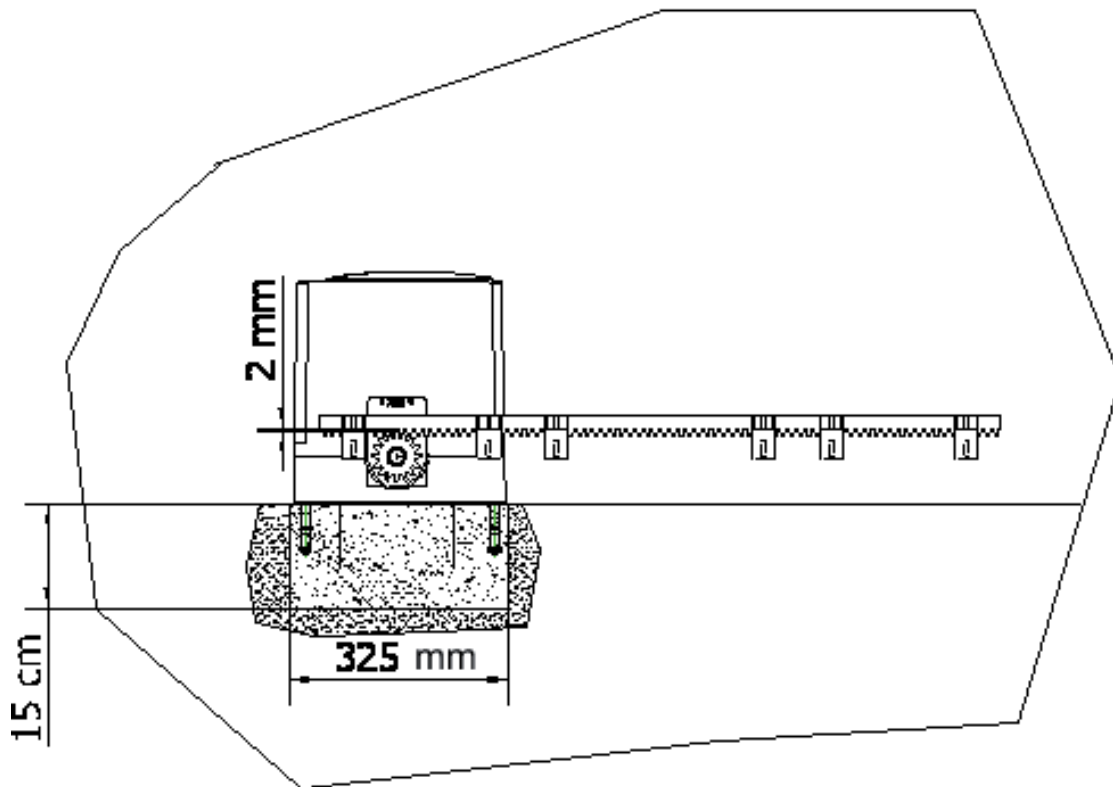


FIG. 3

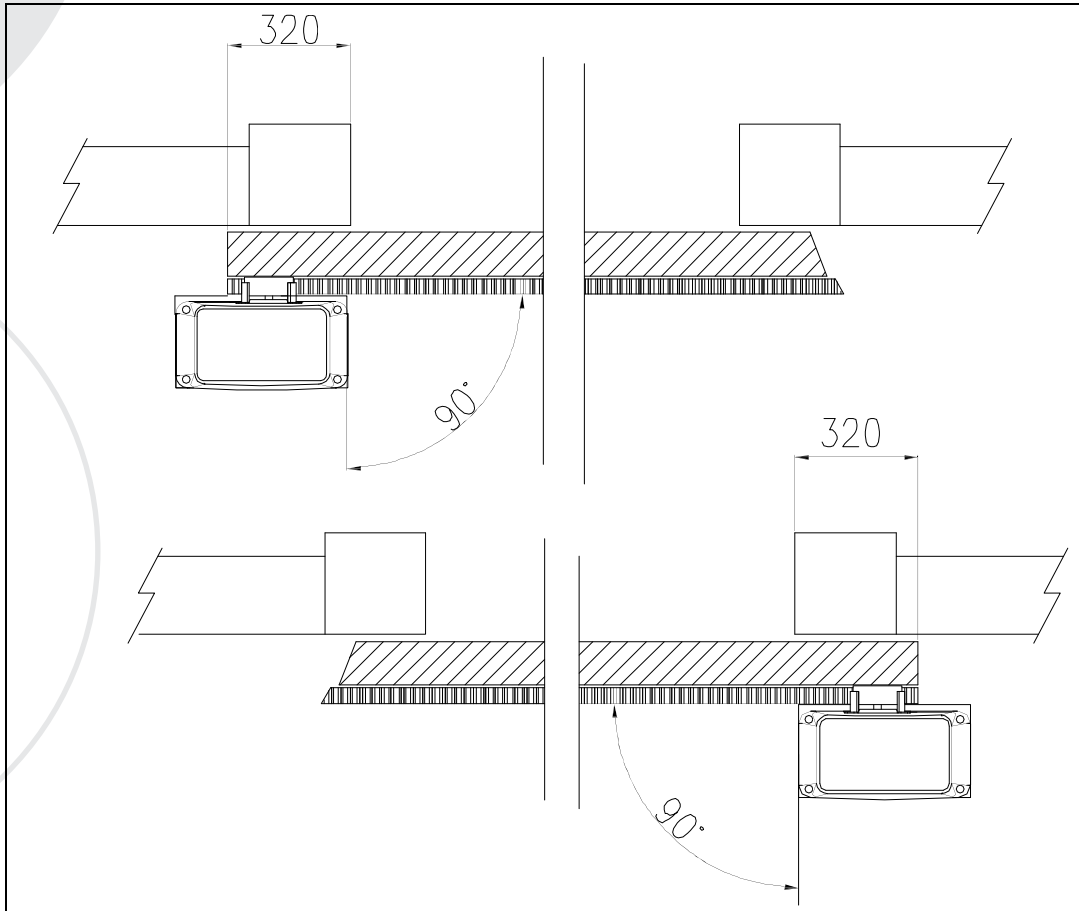


FIG. 4

## 6- POSITIONING THE LIMIT SWITCHES BRACKETS (CAMMES)

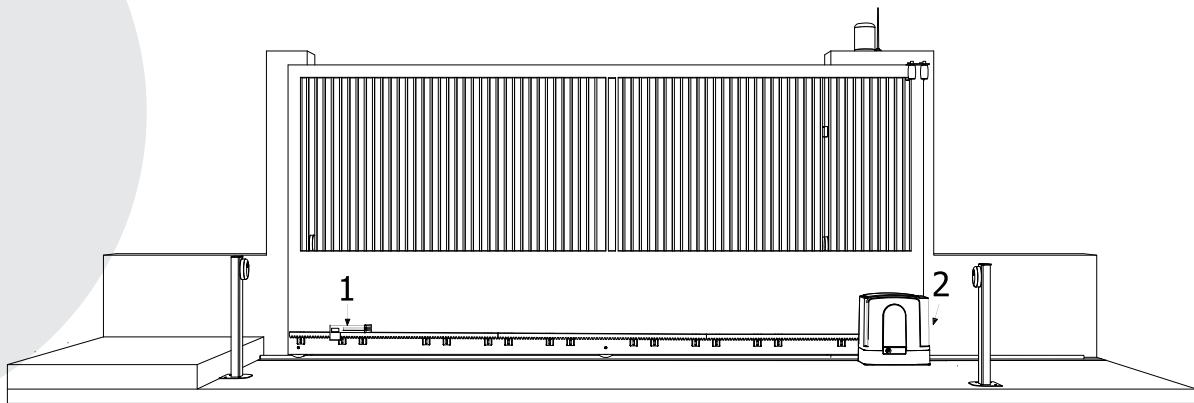


FIG. 5

Manually position the gate completely open and fasten the limit switch brackets (1) (2) onto the rack so that the limit switch lever exceeds the length of the brackets by approximately two-thirds. Repeat the operation with gate completely closed. Provide power and carry out some opening and closing operations (see control board user manual). Adjust the limit switch brackets so that the gate stops approximately 20 mm before the opening and closing stops.

## 7- UNLOCKING THE MOTOR MANUALLY

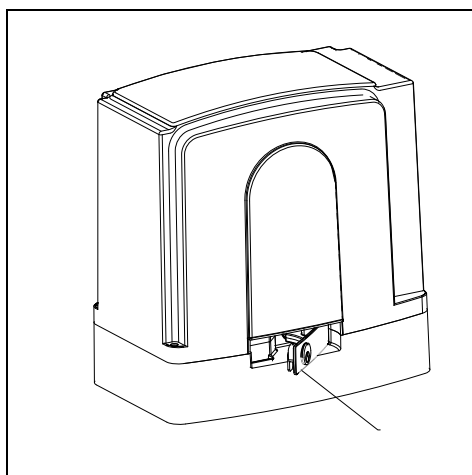


FIG. 6

### RELEASE INSTRUCTION

In case of fault or power failure, insert the key in the lever lock and turn it of 90°CW. Pull and turn the lever approx. 90°until it stops and the gate move manually.



**WARNING:**

- perform locking and lock release operations with motor cut off.
- activation of the manual release may cause uncontrolled movement of the driven part due to mechanical failures or an out-of-balance condition

### LOCK INSTRUCTION :

To re-lock the gearmotor, return the lever in closed position and lock it and take the key away.

## 9- TYPICAL INSTALLATION

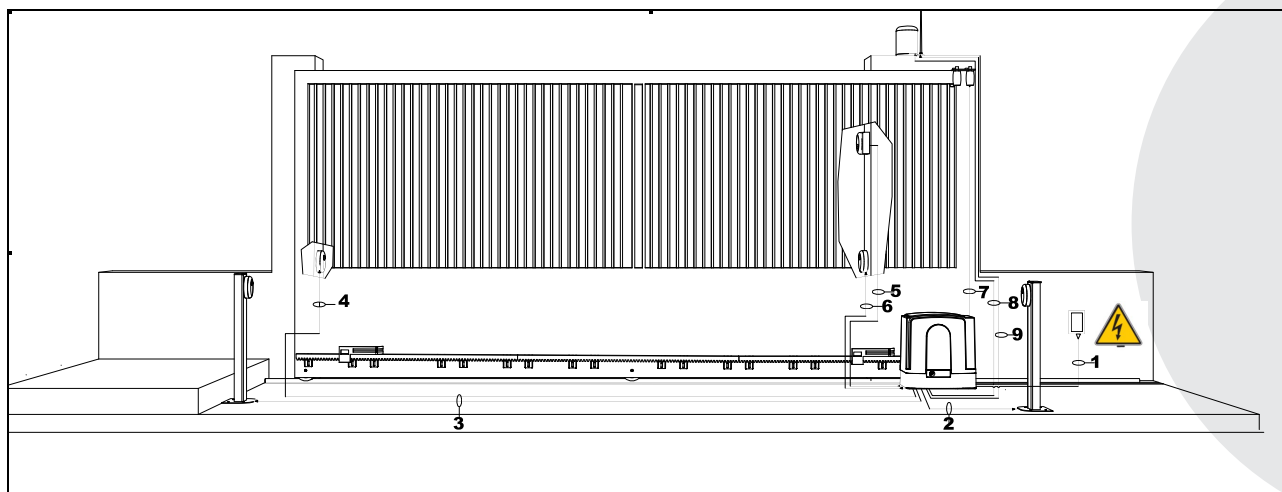


FIG. 9

### CONNECTIONS CABLES

		Cables section sqmm
1	POWER SUPPLY	3x1,5
2	TX PHOTOCCELL ON POST	2x0,75
3	RX PHOTOCCELL ON POST	4x0,75
4	TX PHOTOCCELLS	2x0,75
6	RX PHOTOCCELLS	4x0,75
5	KEY SELECTOR	3x1
7	FLASHING LAMP	2x1
8	AER AL	RG59

FOR THE ELECTRICAL CONNECTIONS REFER TO THE USER MANUAL OF THE CONTROL BOARD



***WARNING: Important safety instructions. It is important for the safety of persons to follow these instructions. Save these instructions.***



***WARNING: The drive shall be disconnected from its power source during cleaning, maintenance and when replacing parts***

Install a gate's safety system that complies with current regulations. Choose short routes for cables and keep power cables separate from control ones. Install the control card in a waterproof box. Please refer to current regulations when setting the gear motor's maximum torque. We advise you to install an outdoor switch, in compliance with European standards on the issue of safety, to turn the electricity off when servicing the gate. Check that each single installed device is efficient and effective. Affix easily readable signs warning about the presence of a motorised gate.

#### **USE**

It is absolutely forbidden to use the device for any other purposes. The installed electronic unit (which must have built-in electric friction), allows to select the following functions:

- automatic: one control impulse will open or close the gate;
- semi-automatic: one control impulse will open or close the gate.

In case of a blackout, manual operation is possible by activating the unlocking device.

Having an automatic and electric power device requires special attention in a few situations:

- do not allow children to play with the appliance or its controls, including remotes
- the appliance is not to be used by persons (including children) with reduced physical, sensory or mental capabilities or lack of experience and knowledge, unless they have been given supervision or instruction;
- not to touch the device with wet hands and/or wet or bare feet;
- to turn off electricity before opening the control box and/or actuator;
- not to pull the lead to pull the plug out;
- to put the gate in movement only when it is completely visible;
- to keep out of the gate's range of action if it is moving. Wait until it has stopped;
- not to let children or animals play near the gate;
- not to let children use the remote control or other operating devices;
- to carry out routine maintenance;
- in case of failure, to turn off electricity and operate the gate manually only if it is possible and safe. Refrain from touching the gate and call an authorised technician.
- when operating a biased-off switch, make sure that other persons are kept away
- frequently examine the installation for imbalance and signs of wear or damage to cables, springs and mounting. Do not use if repair or adjustment is necessary



## MAINTENANCE

The MOOVY SERIES geared motors are manufactured for long-term use. Nonetheless, their normal operation can be compromised by the conditions of the gate; therefore, we will list some operations to keep the gate efficient.

Warning: Non-specialized staff cannot operate the gate during maintenance. You are advised to cut the network power in order to avoid accidents or shocks. If the power must be on for various inspections, you are advised to check and/or deactivate any possible control devices (remote controls, keyboards, etc...) except for the device used by the maintenance operator.

Warning: The drive shall be disconnected from its power source during cleaning, maintenance and when replacing parts.

### Routine maintenance

Periodic checks by professional installer at intervals which may not exceed six months shall be performed to ensure safe operation.

Each of the following operations must be done when needed and in all cases at least every 6 months:

- Gate
- Lubricate the gate's sliding wheels;
  - Check the cleanliness and air-tightness of the rack.

### Automation System

- Check the operation of the safety devices (photo-cells, ribs, torque limiter) using the methods described by the suppliers

### Extraordinary Maintenance

If special maintenance is required for mechanical parts, you are advised to send the gear motor out for repairs to be performed by the technicians at the manufacturer.

## Pursuant to legislation for the implementation of Directive 2012/19/ EU on "Waste electrical and electronic equipment (WEEE)"



It is forbidden to dispose of electrical items and electronic equipment as municipal waste, as evidenced also by the symbol shown on the product and/or its packaging.

These forms of waste are subject to separate collections organised by municipal authorities, or may be returned to the retailer when buying a new appliance of the same type. Improper disposal or misuse of such equipment or its component parts can damage the environment and human health due to the presence of hazardous substances. Illegal disposal of this waste is forbidden of the legislation currently in force.

# EU Declaration of Conformity

and Declaration of Incorporation of "quasi-machines" (pursuant to the Machinery Directive 2006/42/CE, Att.II, B)



<b>Company name:</b>	<b>QUIKO ITALY SRL</b>
<b>Postal address:</b>	Via Seccalegno, 19
<b>Postcode and City:</b>	36040, Sossano (VI) - Italy
<b>Telephone number:</b>	+39 0444 785513
<b>E-Mail address:</b>	info@quikoitaly.com

declare that the DoC is issued under our sole responsibility and belongs to the following product:

<b>Apparatus model/Product:</b>	<b>Moovy QK-MXXXX ; QK-MXXXXB ; QK-MXXXXBFX (where XXXX stands for the max. gate weight in kg)</b>
<b>Type:</b>	AUTOMATIONS FOR SLIDING GATES (230/110/24V)
<b>Batch:</b>	See the label on the motor

The object of the declaration described above is in conformity with the relevant Union harmonisation legislation:

- **Directive 2006/42/CE (MD Directive)**

- It is declared that the relevant technical documentation has been drawn-up in compliance with attachment VII B.
- It is also declared that the following essential health and safety requirements have been respected: 1.1.1 - 1.1.2 - 1.1.3 - 1.1.5 - 1.2.1 - 1.2.6 - 1.3.1 - 1.3.2 - 1.3.3 - 1.3.4 - 1.3.7 - 1.3.9 - 1.5.1 - 1.5.2 - 1.5.4 - 1.5.5 - 1.5.6 - 1.5.7 - 1.5.8 - 1.5.10 - 1.5.11 - 1.5.13 - 1.6.1 - 1.6.2 - 1.6.4 - 1.7.2 - 1.7.3 - 1.7.4 - 1.7.4.1 - 1.7.4.2 - 1.7.4.3.
- The undersigned declares that the afore-mentioned "partly-completed machinery" cannot be commissioned until the final machine, into which it has been incorporated, has been declared compliant with the Machinery Directive 2006/42/CE.
- On duly justified request, the manufacturer commits to transmitting the information regarding the "partly-completed machinery" to the national authorities without prejudice to their intellectual property rights.

- **Directive 2014/53/EU (RED Directive)**

- **Directive 2011/65/EU (RoHS)**

The following harmonised standards and technical specifications have been applied:

<b>Title:</b>	<b>Date of standard/specification</b>
EN 61000-6-2	2005 + AC:2005
EN 61000-6-3	2007 + A1:2011+AC:2012,
EN 301 489-1 V2.2.3	2019
EN 301 489-3 V2.1.1	2017
EN 60335-2-103	2015
EN 12453	2017
EN 62479	2010
EN 300 220-2 V3.1.1	2017
EN IEC 63000	2018

## Additional information

<b>Signed for and on behalf of:</b>		
<b>Revision:</b>	<b>Place and date of issue:</b>	<b>Name, function, signature</b>
01.00	GG/MM/AAAA	(Borinato Luca, Legal Officer)
	Sossano, 28/09/2021	

# EU Declaration of Conformity

---

**Company name:**

---

**Postal address:**

---

**Postcode and City:**

---

**Telephone number:**

---

**E-Mail address:**

---

declare that the DoC is issued under our sole responsibility and belongs to the following product:

---

**Apparatus model/Product:**

---

**Type:**

---

**Installation location**

---

The object of the declaration described above is in conformity with the relevant Union harmonisation legislation:

- Directive 2006/42/CE (MD Directive)
- Directive 2014/53/EU (RED Directive)
- Directive 2011/65/EU (RoHS)

The following harmonised standards and technical specifications have been applied:

Title:	Date of standard/specification
EN 61000-6-2	2005 + AC:2005
EN 61000-6-3	2007 + A1:2011+AC:2012,
EN 301 489-1 V2.2.3	2019
EN 301 489-3 V2.1.1	2017
EN ISO 12100	2010
EN 12453	2017
EN 12604	2017 +A1: 2020
EN 62479	2010
EN 300 220-2 V3.1.1	2017
EN IEC 63000	2018

---

**Additional information**

---

**Signed for and on behalf of:**

---

**Revision:**

**01.00**

---

**Place and date of issue:**

**GG/MM/AAAA**

---

**Name, function, signature**

**(Administrator)**

---



**QUIKO ITALY SRL**

Via Seccalegno, 19  
36040 Sossano (VI) - Italy  
Tel. +39 0444 785513  
Fax +39 0444 782371  
**info@quikoitaly.com**  
**www.quikoitaly.com**

