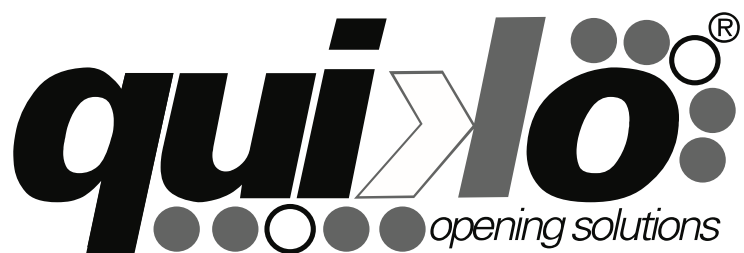




QK-LEDKIT

High Visibility Neon Effect Lighting System for ICARUS series Automatic Barriers



use and maintenance manual

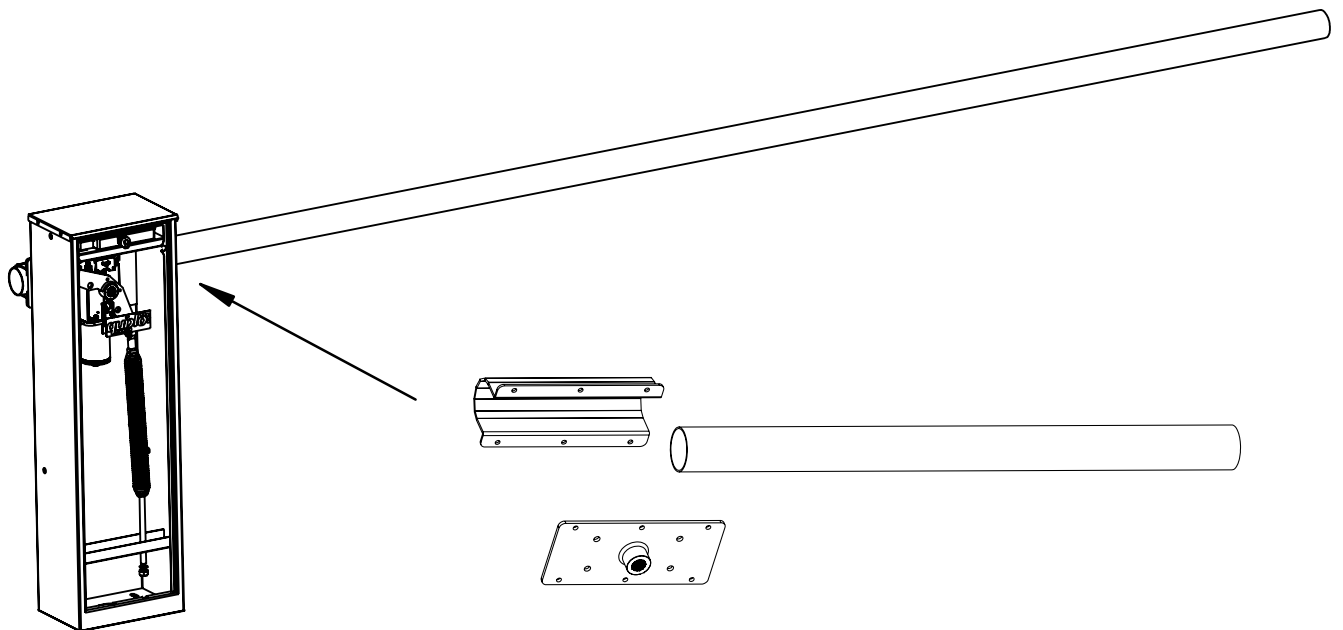
CONTENTS OF THE KIT



- 01 : 12V LED TUBE
- 02 : 230/12V TRANSFORMER
- 03 : POWER SUPPLY CABLE FOR THE LED TUBE
- 04 : SET OF PLASTIC SUPPORTS FOR THE LED TUBE
- 05 : DOUBLE-SIDED TAPE
- 06 : HEAT-SHRINK SHEAT AND OPTIONAL SET OF SELF-DRILLING SCREWS

INSTALLATION PROCEDURE

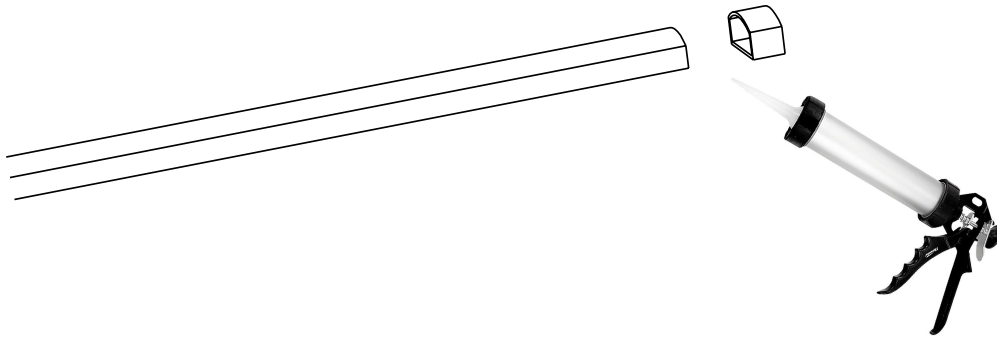
- Decide where you will place the transformer (n. 02) of the led tube. You can either install it inside the body of the barrier or under the top cover near the control board.
- If the boom is already installed, remove the boom and its U clamp by removing the screws that keep it in place so to access the boom plate support.



- Use the holes that are placed on the back of the barrier's body and on the boom plate support to pass the power supply cable (n.03) of the led tube. Cut a small hole in the black plastic cap of the hole to pass the cable through it, as shown in the picture.



- Place back in position the boom and the U clamp.
- Cut the led tube at the desired length and place back the plastic cap using some silicone. Make sure to cut the tube between two leds, to do so it might be useful to power up the led tube so to know precisely where to cut the tube.



- Fix the led tube in position using the double-sided tape (n.05) and plastic supports (n.04).

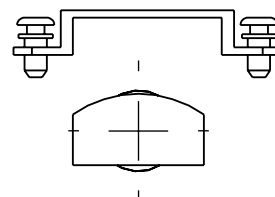
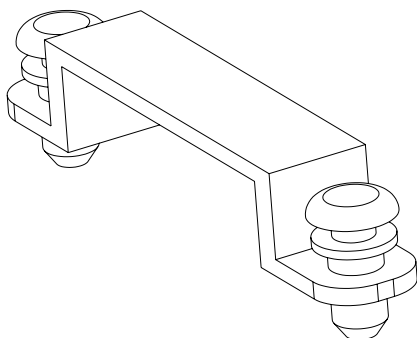
Remark:

The plastic supports can be fixed in position either by: drilling the holes for the plastic supports inserts on the boom (diameter 3mm)

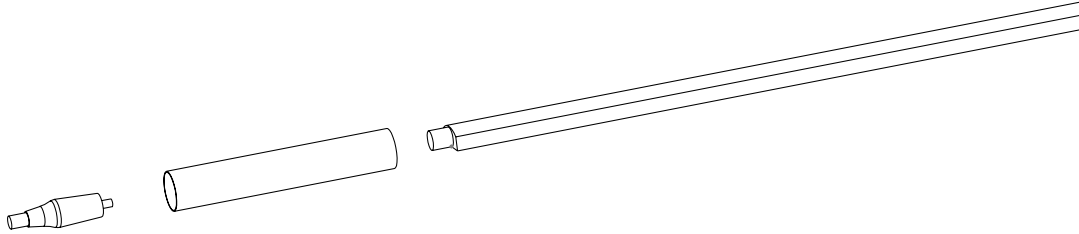


or

by using the self-drilling screws (n.06) supplied inside the kit.



- Connect the power supply cable to the led tube. Mind to place the supplied heat-shrink sheat (n.06) around the connector to protect it from humidity.



IMPORTANT NOTICE:

This led kit has an automatic daylight detection feature that will turn off the led tube after a few cycles from the power up when daylight is detected.

If you want to disable it, so to keep the led tube always on, place a small piece of black tape on the detector (the little sphere that you can feel near the power supply connector), then cover it with the heat-shrink sheat.



- Connect the transformer to the power supply cable of the led tube and 230Vac power supply as per the below picture.

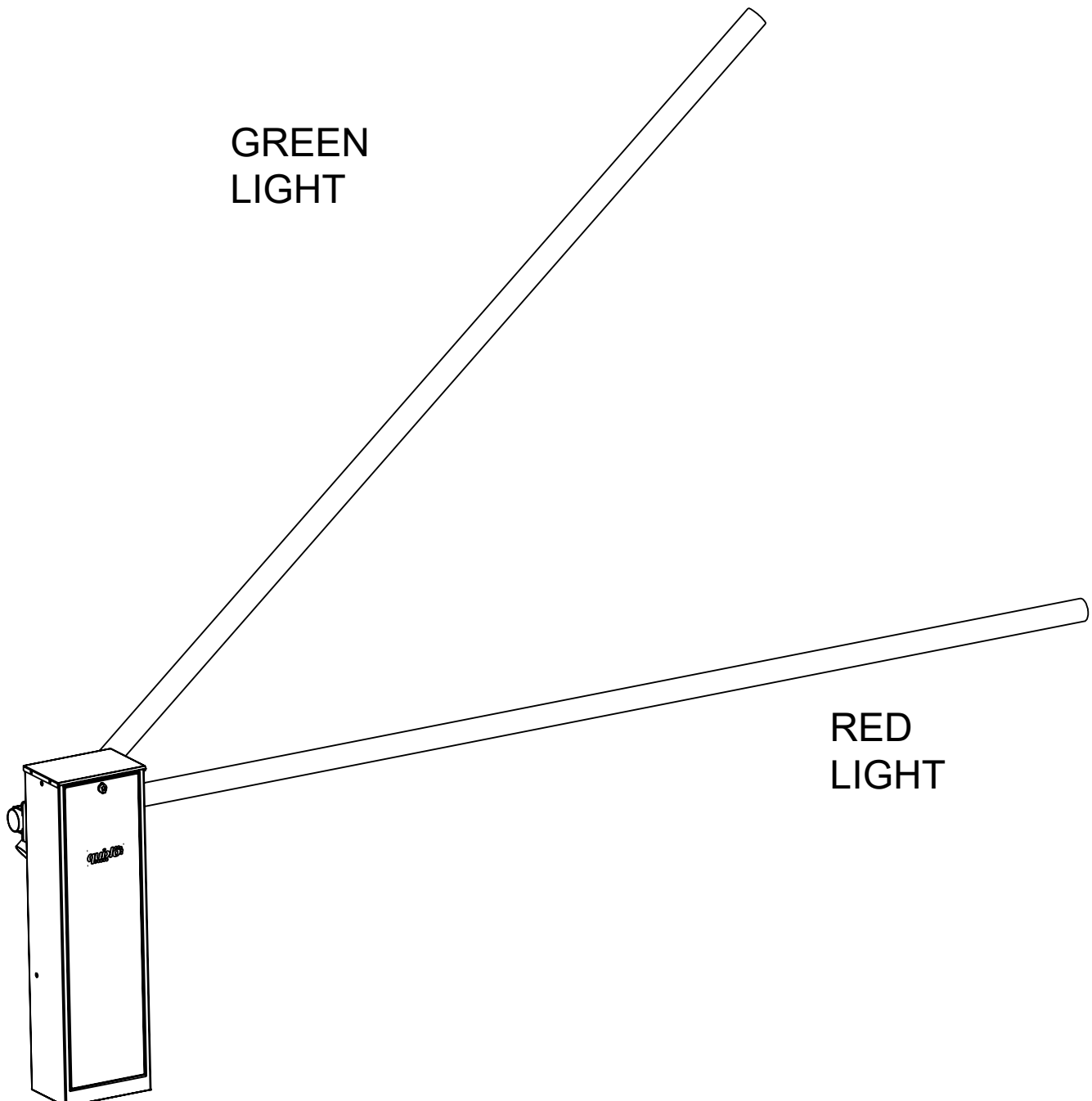


+12V (red wire)
COM (black wire)
Earth connector
Neutral
230Vac

AUTOMATIC POSITION DETECTION FEATURE

This led kit has an automatic position detection feature that will make the lights switch from GREEN (when the barrier is in open position) to RED (when the barrier is in closed position).

This feature is automatic and doesn't need any regulation or programming. The transition happens at about 70° from the completely closed position.



DECLARATION OF CONFORMITY

(OF THE MANUFACTURER)



Manufacturer: QUIKO ITALY SRL

Via Seccalegno, 19
36040 Sossano (VI)
Italia

hereby declares, under his liability, that product:
QK-LEDKIT

is in compliance with the essential safety requirements of the regulations:

- ✓ Electro-magnetic Compatibility Directive2004/108/EC
- ✓ Low Voltage Directive2006/95/EC
- ✓ Machinery Directive2006/42/EC

and their amendments and modifications, and with the regulations set forth by the National Legislative Body of the country in which the machinery is destined for use.

Sossano, 01/01/2023

Managing Director
Luca Borinato



QUIKO ITALY SRL

Via Seccalegno, 19 36040

Sossano (VI) - Italy Tel.

+39 0444 785513 Fax

+39 0444 782371

info@quikoitaly.com

www.quikoitaly.com



*The Manufacturer can technically improve
the quality of its products without
any prior notice.*