



NEO

NEO is the linear swing gate operator of QUIKO particularly intended for residential applications. Leaves up to 4m 300Kg can be automated with ease with this slim motor, which dimensions allow it to be installed in areas where limited space is available. The actuator is self-locking and can be unlocked easily in case of electrical blackout by means of the supplied unlocking key. Thanks to the sturdiness of materials used during production, NEO is almost maintenance free and designed to last long.

NEO è il motoriduttore lineare per cancelli a battente di QUIKO particolarmente adatto a contesti residenziali. Ante fino a 4m 300kg possono essere automatizzate con semplicità con questo motore di piccola taglia, le cui dimensioni ridotte consentono di installarlo anche in presenza di spazi limitati. L'attuatore è irreversibile e può essere sbloccato in caso di assenza di corrente tramite l'apposita chiave di sblocco fornita. Grazie alla robustezza dei componenti utilizzati per la produzione, NEO non richiede alcuna manutenzione ed è disegnato per durare a lungo.

NEO le moteur pour portail a battants de Quiko utilisée particulièrement en installations résidentiels. C'est possible de motoriser des portails avec ventail maxi 4m 300kg et grâce a son petit dimensionnes il est possible de lui installer aussi en places où il n'est pas beaucoup de place. Le moteur est irréversible et il peut être débloqué grâce au system de dérouillage manuel utilisant la clé fournie. Grâce a la robustesse des matériaux utilises lors la leur production NEO a besoin de minimal entretien ainsi que a été désignée pour durer longtemps.



Quiko Italy
Via Seccalegno, 19
36040 Sossano (VI) - Italy
Tel. +39 0444 785513
Fax +39 0444 782371
info@quikoitaly.com
www.quikoitaly.com



QUIKO can technically improve the quality of its products without any prior notice.

QUIKO può apportare ai suoi prodotti modifiche tecniche, migliorative della qualità, senza preavviso.

Quiko se réserve le droit d'apporter des modifications et améliorations techniques sans préavis.

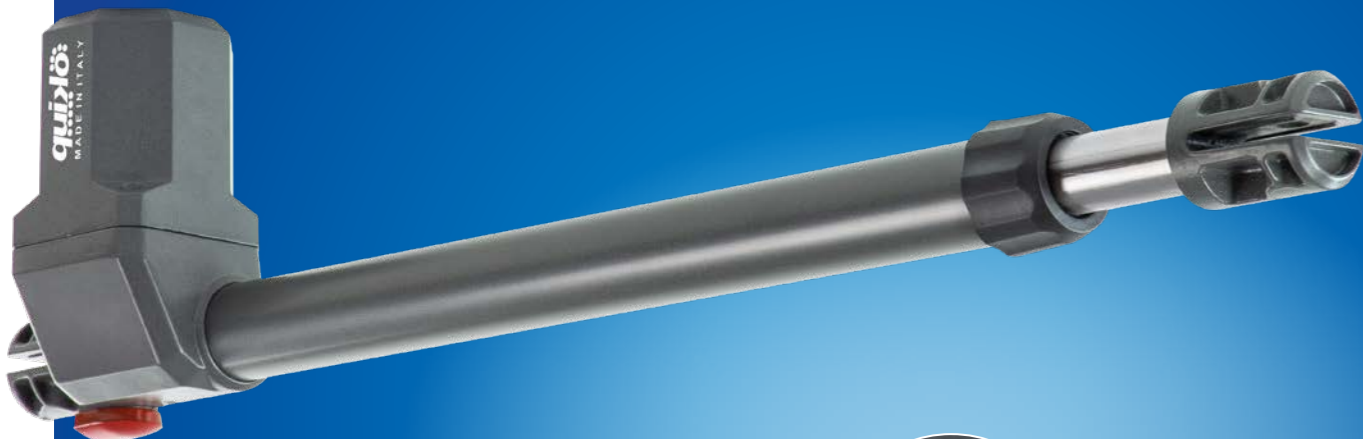


NEO

NEW EDITION

QK-N400 230Vac max 4m 300Kg

QK-N600 230Vac max 5m 300Kg **NEW**



Key operated manual release
Sblocco manuale con chiave
Déblocage manuel avec la clé

THE DIFFERENCE IS IN THE DETAILS

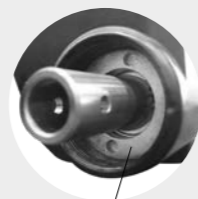
NEO IS THE STURDIEST GEARMOTOR OF ITS TYPE ON THE MARKET

Oversize deep-seated Seeger rings.

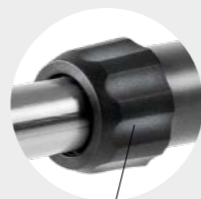
Union between the shaft and endless screw. Our system is one of the strongest on the market for gate motors.

Pressed fit sealed bearing.

Shaft and endless screw made of premium quality high tensile steel for strength and longevity and specially treated for external use and rust prevention.



Bearing housing fitted with hard metal crown to remove bearing and shaft stress and in turn, any wear on the aluminium tube.



Extremely sturdy tube support end ring, made of reinforced composite and giving the highest strength profile possible.



Installation limits per leaf Limiti di impiego per anta Contraintes d'utilisation				
	2 m	3 m	4 m	5 m
QK-N400	700kg	400kg	300kg	-
QK-N600	900kg	600kg	500kg	300kg

The values shown within the table above can be considerably reduced in windy areas.

I valori mostrati nella tabella sopra possono essere ridotti considerevolmente in zone ventose.

Les valeurs indiquées dans le tableau peuvent être considérablement réduits dans les zones venteuses.

TECHNICAL FEATURES	DATI TECNICI	DONNEES TECHNIQUES	QK-N400	QK-N600
Power	Alimentazione	Alimentation	230Vac 50 / 60Hz	230Vac 50 / 60Hz
Current absorbed (motor) (A)	Assorbimento motore (A)	Intensité (A)	0,9 - 1,5	0,9 - 1,5
Power absorbed (W)	Potenza assorbita (W)	Puissance absorbée (W)	350	350
Capacitor (µF)	Condensatore (µF)	Condensateur (µF)	8	8
Protection level (IP)	Grado di protezione (IP)	Indice de protection (IP)	44	44
Opening time (sec)	Tempo apertura (sec)	Vitesse (sec)	20	20
Stroke (mm)	Corsa (mm)	Course (mm)	400	600
Max. thrust (N)	Spinta max. (N)	Couple max (N)	2200	2200
Working temp. (°C Min/Max)	Temp. di esercizio (°C Min/Max)	Temp. de service (°C Min/Max)	-30/+70	-30/+70
Thermal cut-out (°C)	Termoprotezione (°C)	Protection thermique (°C)	150	150
Working cycle (%)	Ciclo di lavoro (%)	Cycle de travail (%)	40	40
Motor weight (kg)	Peso motore (kg)	Poids (kg)	6	6
Max. leaf length (m)	Lunghezza max. anta (m)	Longueur maxi vantail (m)	4	4

KIT

QK-N400KIT 230Vac max 4m 300Kg (X2)

QK-N600KIT 230Vac max 5m 300Kg (X2)

20 PCS PALLET



KIT LIGHT

KIT FULL

Pair of gearmotors with screw mount brackets + Control board with 433,92MHz receiver + Antenna + 4 channel transmitter + Pair of IR photocells + Flashing lamp + Key switch

Coppia di motoriduttori con staffe ad avvitare + Centrale con radiorecivente 433,92MHz + Antenna + Telecomando quadricanale + Coppia di fotocellule IR + Lampeggiante + Selettore a chiave

Deux motoréducteurs avec pattes de fixation à visser + Logique de commande avec récepteur radio 433,92MHz + Antenne + Emetteur 4 canaux + Jeu de photocellules IR + Feu clignotant + Sélecteur à clé

The content of the package may vary; consult the retailer
Il contenuto della confezione potrebbe variare; contattare il rivenditore
Le contenu du paquet peut varier; contactez revendeur

OPTIONALS

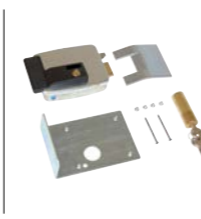


QK-CE2204UNISW

230V control board with 433,92MHz radioreceiver

Centrale 230V con radiorecivente 433,92MHz

Logique de commande 230V avec récepteur 433,92MHz



QK-ELS

12V vertical electrical lock

Elettroserratura 12V verticale

Serrure électrique 12V verticale

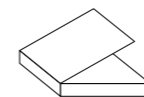


QK-BRAE400

Screw mount brackets for QK-N400 (replacement)

Staffe ad avvitare per QK-N400 (ricambio)

Pattes de fixation à visser pour QK-N400 (rechange)



For other optionals refer to the corresponding page of the catalogue

Per altri optionals andare alla relativa pagina del catalogo

Pour autres optionals se référer à la page correspondante du catalogue

